

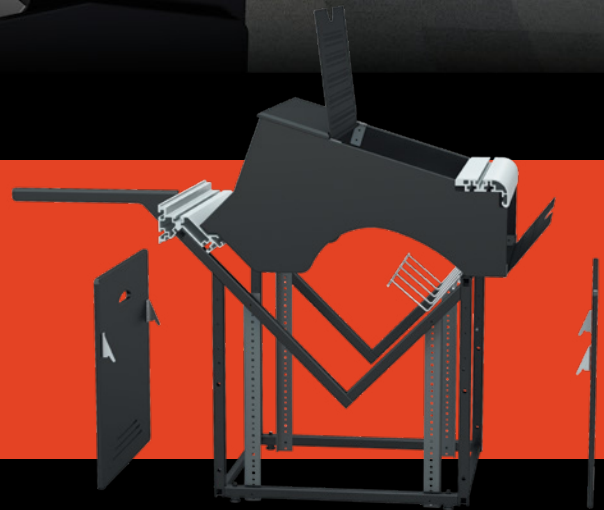


INNOVATIVE TECHNICAL FURNITURE



## MasteRail™

Full Capacity from the ground up,  
**Box Frame** Based Console System



*Customizable, high capacity design  
for control rooms with a diverse range  
and density of equipment*

## TABLE OF CONTENTS:

### ***MASTERAIL***

■ The anatomy of MasteRail .....	<b>2</b>
■ The technology inside MasteRail.....	<b>3</b>
■ The look of your MasteRail .....	<b>4</b>
■ Configure your MasteRail.....	<b>5</b>
■ Rack Bases .....	<b>6</b>
■ Clear Bay Spans .....	<b>7</b>
■ Turret Options.....	<b>8</b>
C-Top Extensions & Drop Wells. ....	<b>9</b>
Flat-Top .....	<b>10</b>
Extended Face .....	<b>11</b>
Straight Face .....	<b>12</b>
Split Face.....	<b>13</b>
■ Countertop Options.....	<b>14</b>
■ Wiring.....	<b>15</b>
■ Transitions .....	<b>16</b>
■ Equipment Wedge Options .....	<b>17</b>
■ Accessories.....	<b>18</b>
■ Standard Laminates .....	<b>19</b>

# The MasteRail Advantage:

## RACK & STACK

With customizable rack bases and a wide variety of rack turret options, MasteRail can support almost any equipment.



Welded steel sub-structure, aluminum extrusion and composite materials ensure lasting durability.



## BUILT TO LAST

## Complete ACCESS

No more crawling under consoles. Hinged top and rear access doors on the turrets make maintenance a breeze. Access lower equipment through front and rear lift off panels.

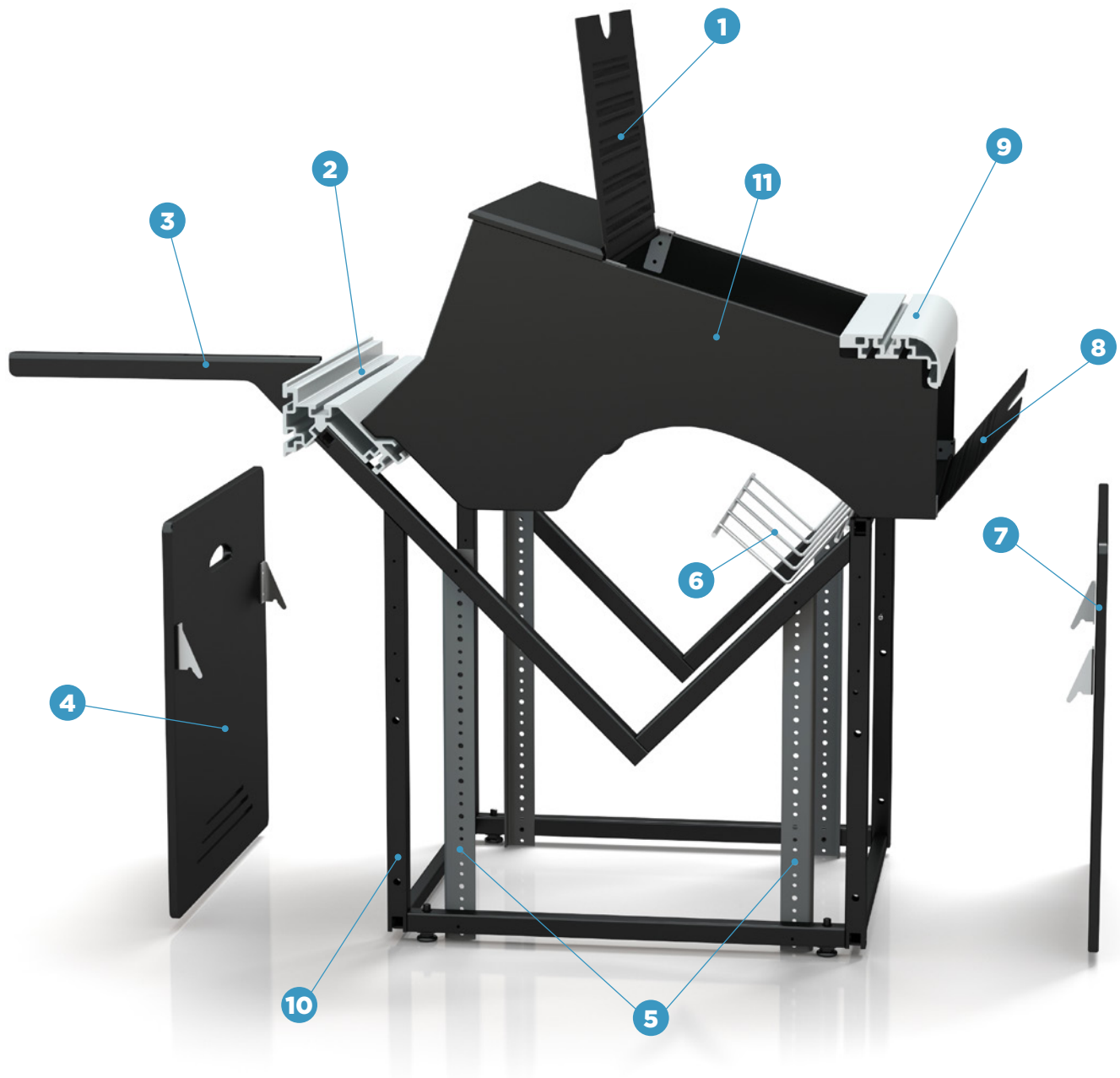


Using a combination of rack bases, clear bay spans and angled transitions ensures the right shape for your space and workflow.

## USER Customizable

# The anatomy of a MasteRail:

---



- |   |   |
|---|---|
| <ul style="list-style-type: none"><li>1 All MasteRail turrets come with top vented/hinged door.</li><li>2 MasteRail front extrusion.</li><li>3 Countertop support arms interlock into the front extrusion.</li><li>4 Lift-off lower front panels.</li><li>5 Front and rear rack rail.</li></ul> | <ul style="list-style-type: none"><li>6 Continuous cable tray throughout the console.</li><li>7 Lift-off lower rear panels.</li><li>8 Hinged/vented rear door.</li><li>9 MasteRail rear extrusion.</li><li>10 Steel stanchion base frame.</li><li>11 Turrets come in a variety of sizes and shapes.</li></ul> |
|---|---|

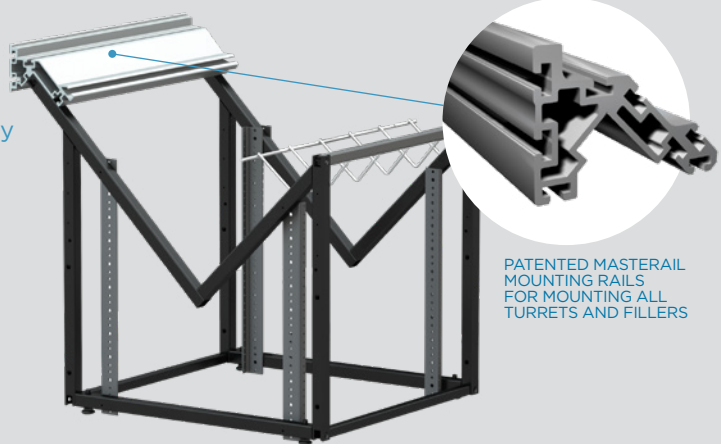


# The technology inside MasteRail:

## Building Blocks

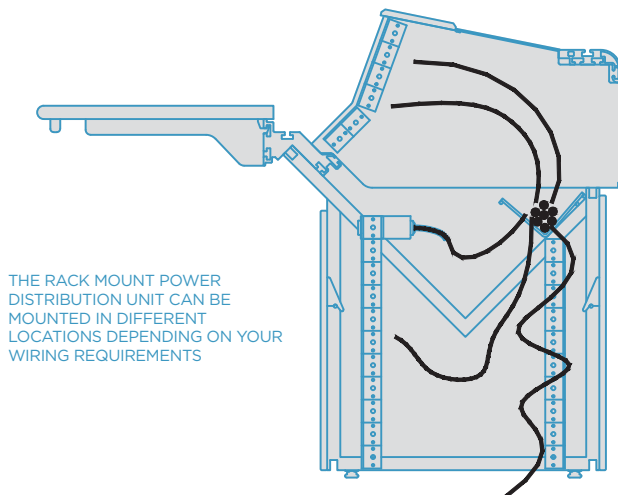
### 1-BAY (19" WIDE)

The concept behind the MasteRail™ technology is the use of pre-engineered components to provide a foundational structure for an infinite number of configurations and layouts. Base frame components are designed to be modular, allowing for future expansion and reconfiguration. A variety of finished materials can be applied to the framework to achieve any desired look or style. You get the custom look, without the custom price. All MasteRail™ components are designed with precision tolerances, allowing for fast, error-proof assembly.



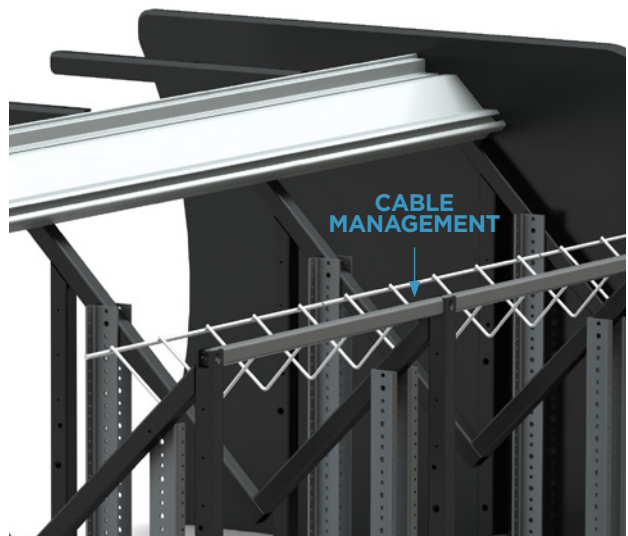
## Wiring

MasteRail uses an open interior design to route wiring between upper rack turrets and lower base structure. Rack bases have an open bottom allowing cables to pass through the floor.



## Continuous Cableways

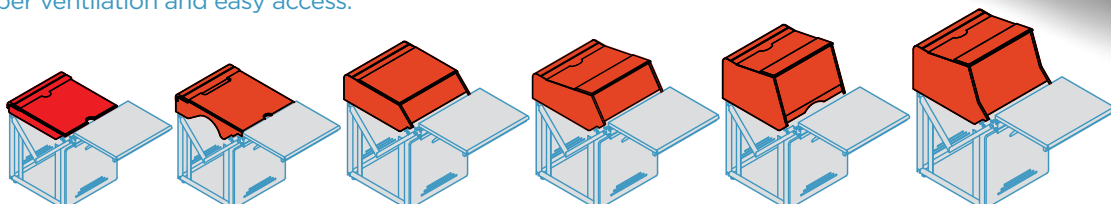
Cable management runs throughout the console.



## Ready for all your gear

EASILY ARRANGE AND RE-ARRANGE TURRETS AND FILLERS AS NEEDED

Turrets come in a variety of sizes and configurations (Flat-Top, Straight Face, Split Face, Extended Face as well as Countertop Extensions and Drop Wells). All designed for proper ventilation and easy access.



# Everything exactly where you want it

## MasteRail™ UNIVERSAL MOUNTING SYSTEM

Aluminum Extrusion has a channel used to mount a variety of accessories giving you maximum flexibility

REAR EXTRUSION



## Maximum Storage Area

Each rack base has 9 RU of usable space with an additional 1 RU reserved for rackmount PDUs. All concealed behind vented lift-off panels.

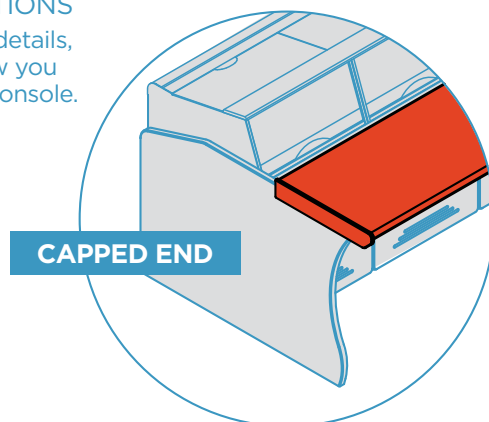


# The look of your MasteRail:

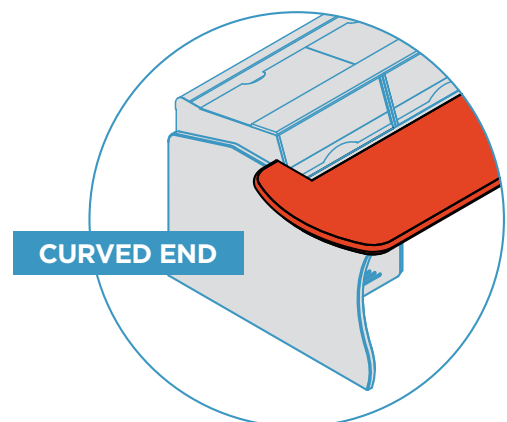
## Give your consoles their own look

### COUNTERTOP VARIATIONS

Countertop shapes, end details, materials and colors allow you to customize your ideal console.



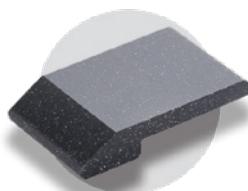
CAPPED END



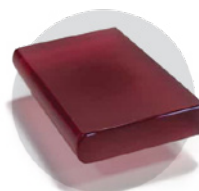
CURVED END



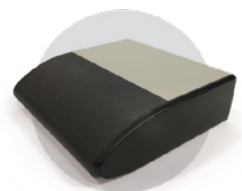
LAMINATE OR  
LINOLEUM  
WITH T-MOLDING



SOLID  
SURFACE



ACRYLIC



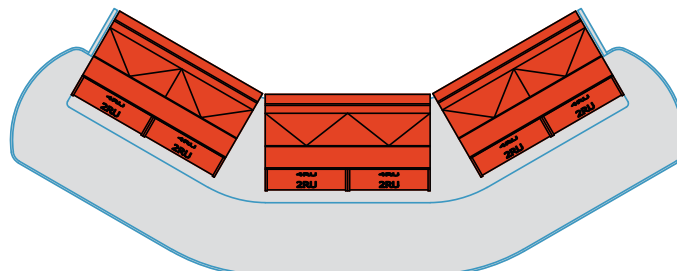
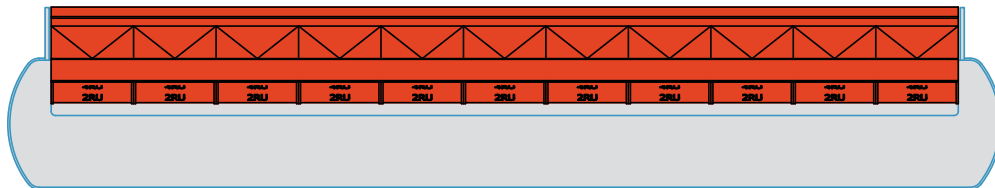
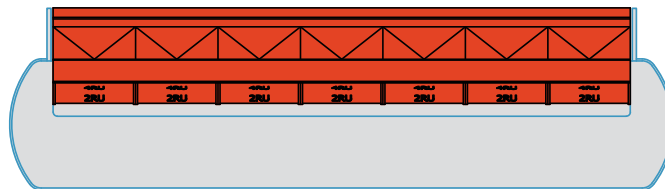
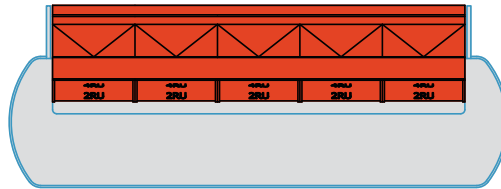
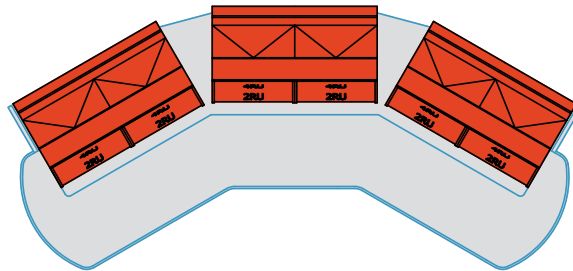
LAMINATE  
W/ COMFORT EDGE

# Configure your MasteRail:

## Expandable and Configurable

MASTERAIL CAN BE CUSTOMIZED TO FIT ANY FOOTPRINT

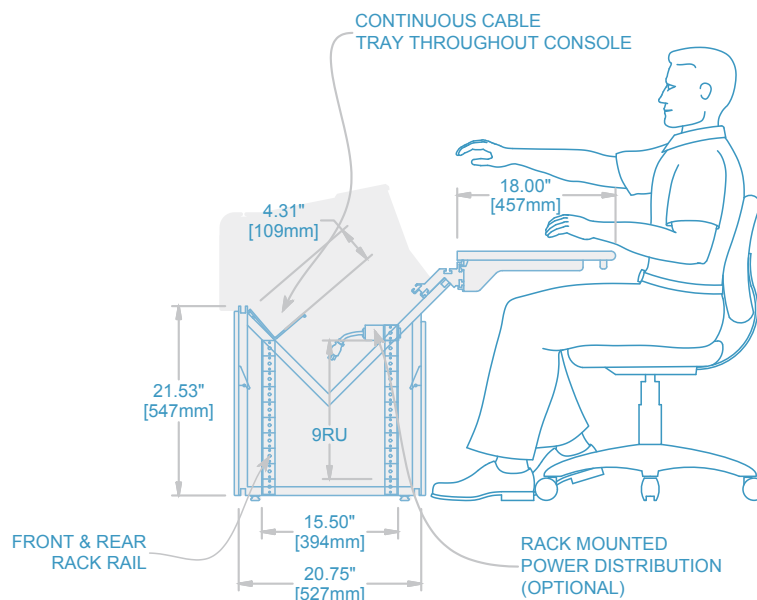
MasteRail™ can also be configured in concave or convex curves as well as free-form S-shape layouts. The lower transition panels ensure that wiring between units is protected and hidden from view.





## Rack Bases

*Fit more equipment than you ever thought possible.*



### TYPICAL RACK BASE SECTION

**FC-MR-B-9R**  
(Single Rack Bay Base)



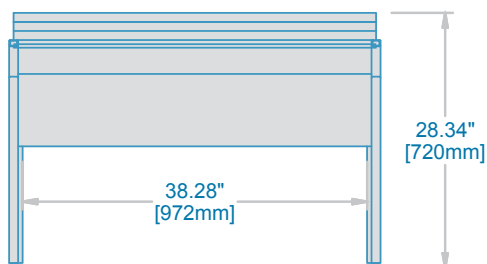


## Clear Bay Spans



### Clear Bay Spans:

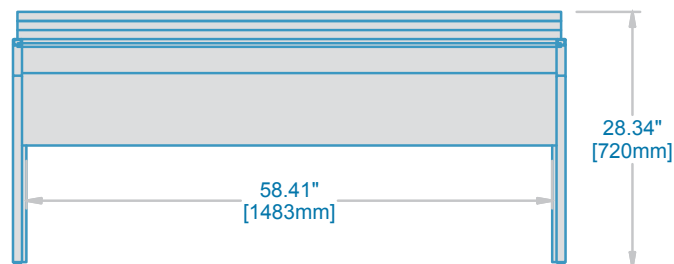
Available in 2 Bay, 3 Bay and 4 Bay Spans with continuous cable management



**2 BAY CLEAR SPAN**

**FC-MR-S-2**

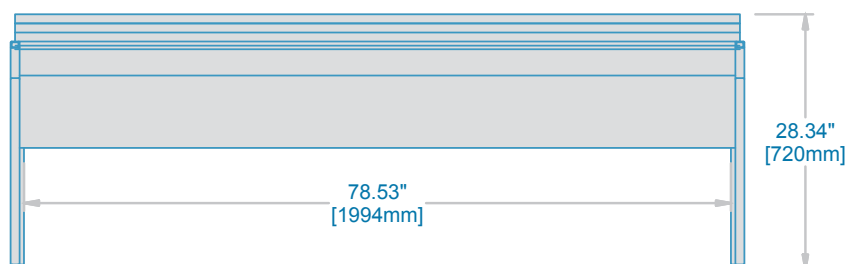
(2 Bay Clear Span)



**3 BAY CLEAR SPAN**

**FC-MR-S-3**

(3 Bay Clear Span)



**4 BAY CLEAR SPAN**

**FC-MR-S-4**

(4 Bay Clear Span)



## Turrets & Inserts



### Ready For All Your Gear

*MasteRail Turrets come in various sizes and shapes.  
Drop well and countertop fillers are also available.*



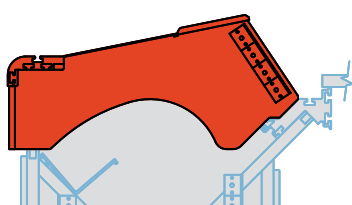
DROP WELL



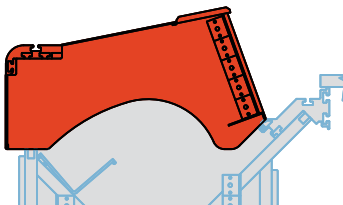
COUNTERTOP EXTENSIONS



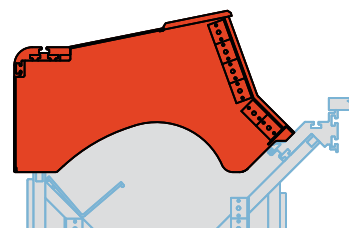
FLAT-TOP TURRETS



EXTENDED FACE TURRETS



STRAIGHT FACE TURRETS

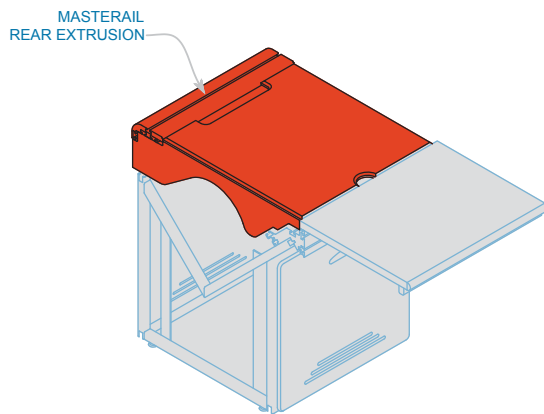


SPLIT FACE TURRETS

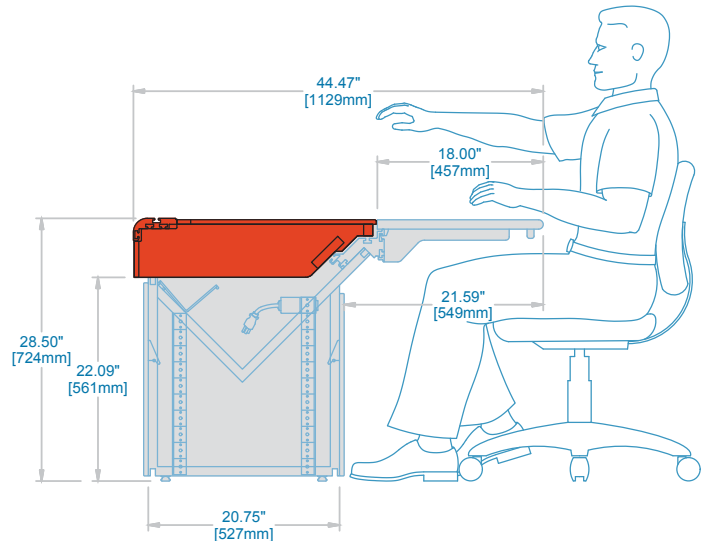


## Countertop Extensions

*For when you need more surface area than rack storage.*

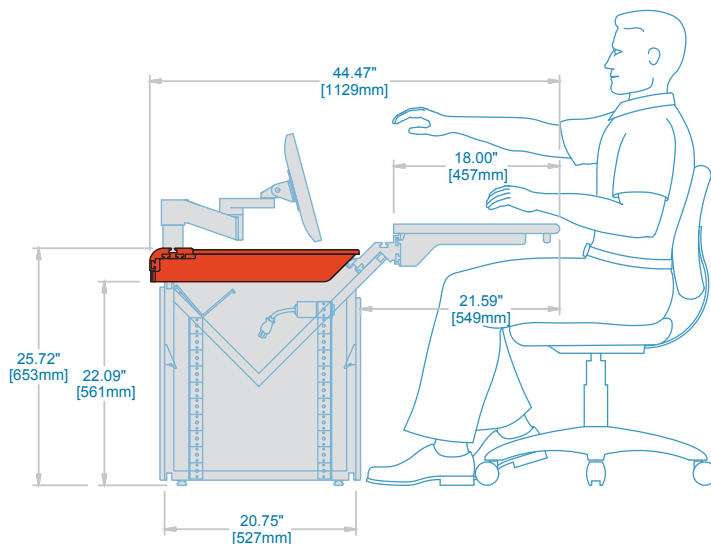


**FC-MR-T-CX**  
(Countertop Extension)

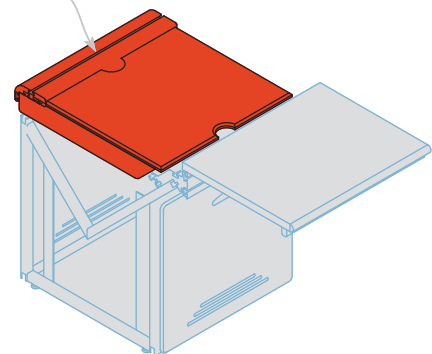


## Drop Wells

*Allow for lower monitor placement for improved sightlines.*



MASTERAIL  
REAR EXTRUSION

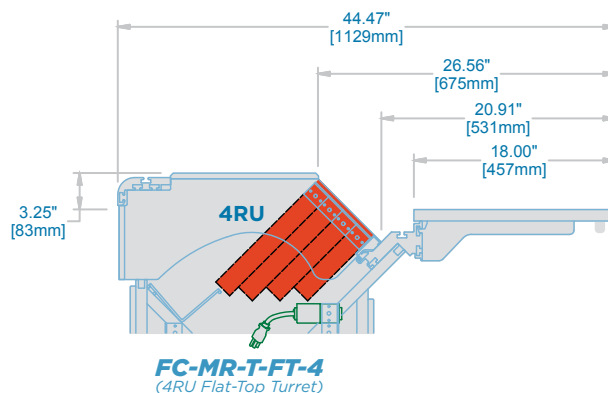
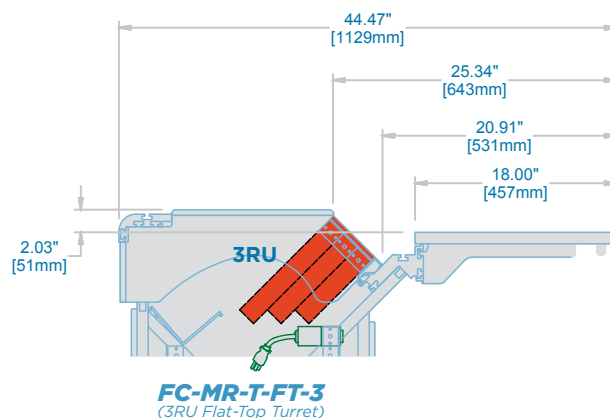
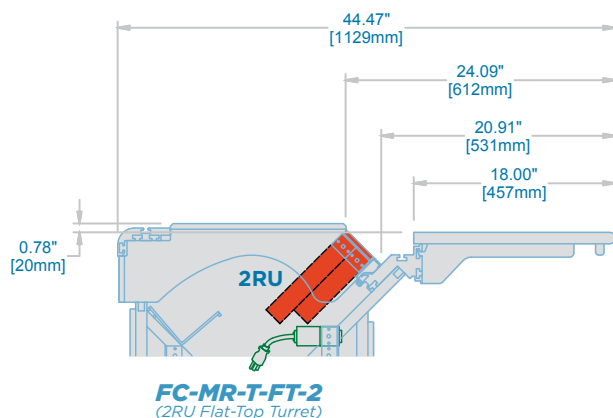
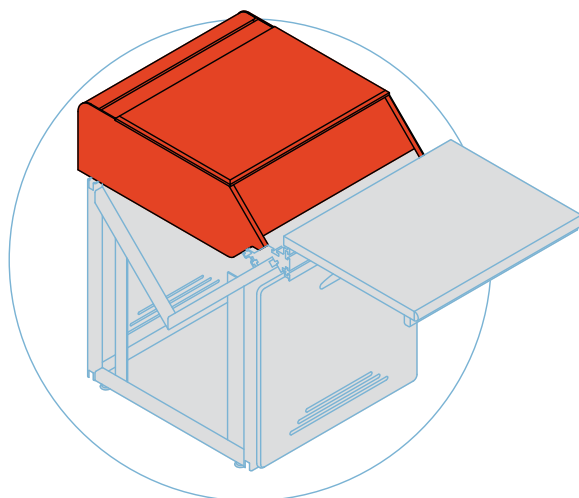


**FC-MR-T-DW**  
(Drop Well)



## Flat-Top Turrets

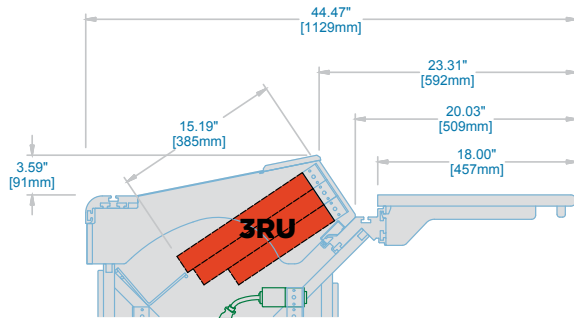
*Flat-Top Turrets allow placement of documents or equipment on top of the turret.*



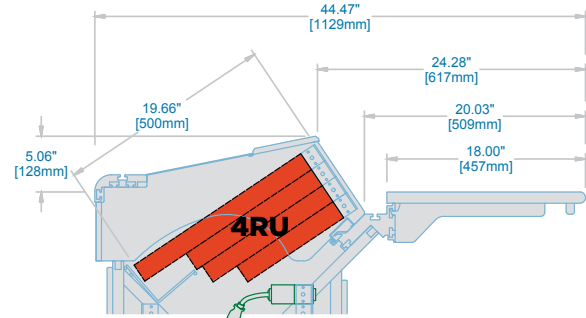


## Extended Face Turrets

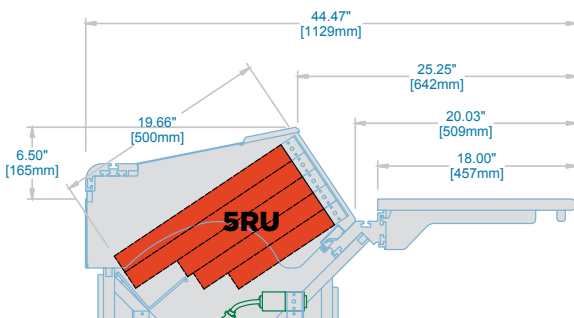
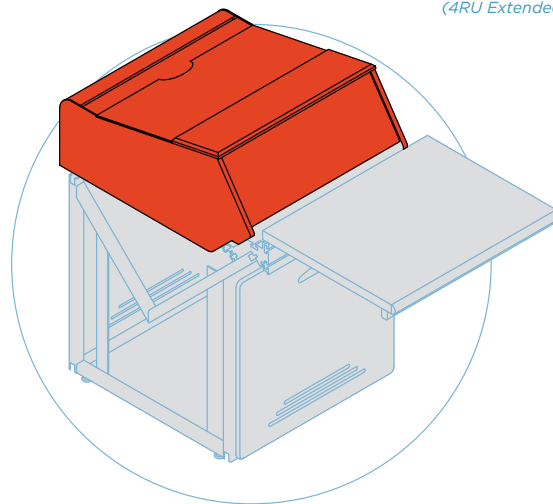
*Extended Face Turrets reduce operator reach and increase maximum equipment depth.*



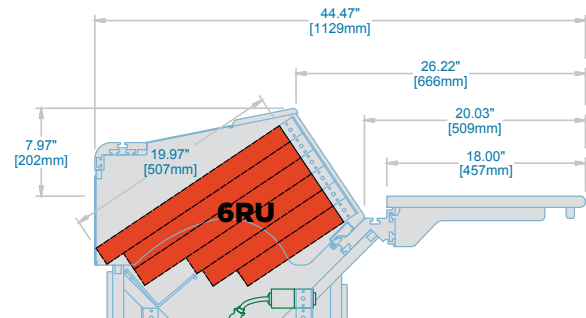
**FC-MR-T-EF-3**  
(3RU Extended Face Turret)



**FC-MR-T-EF-4**  
(4RU Extended Face Turret)



**FC-MR-T-EF-5**  
(5RU Extended Face Turret)



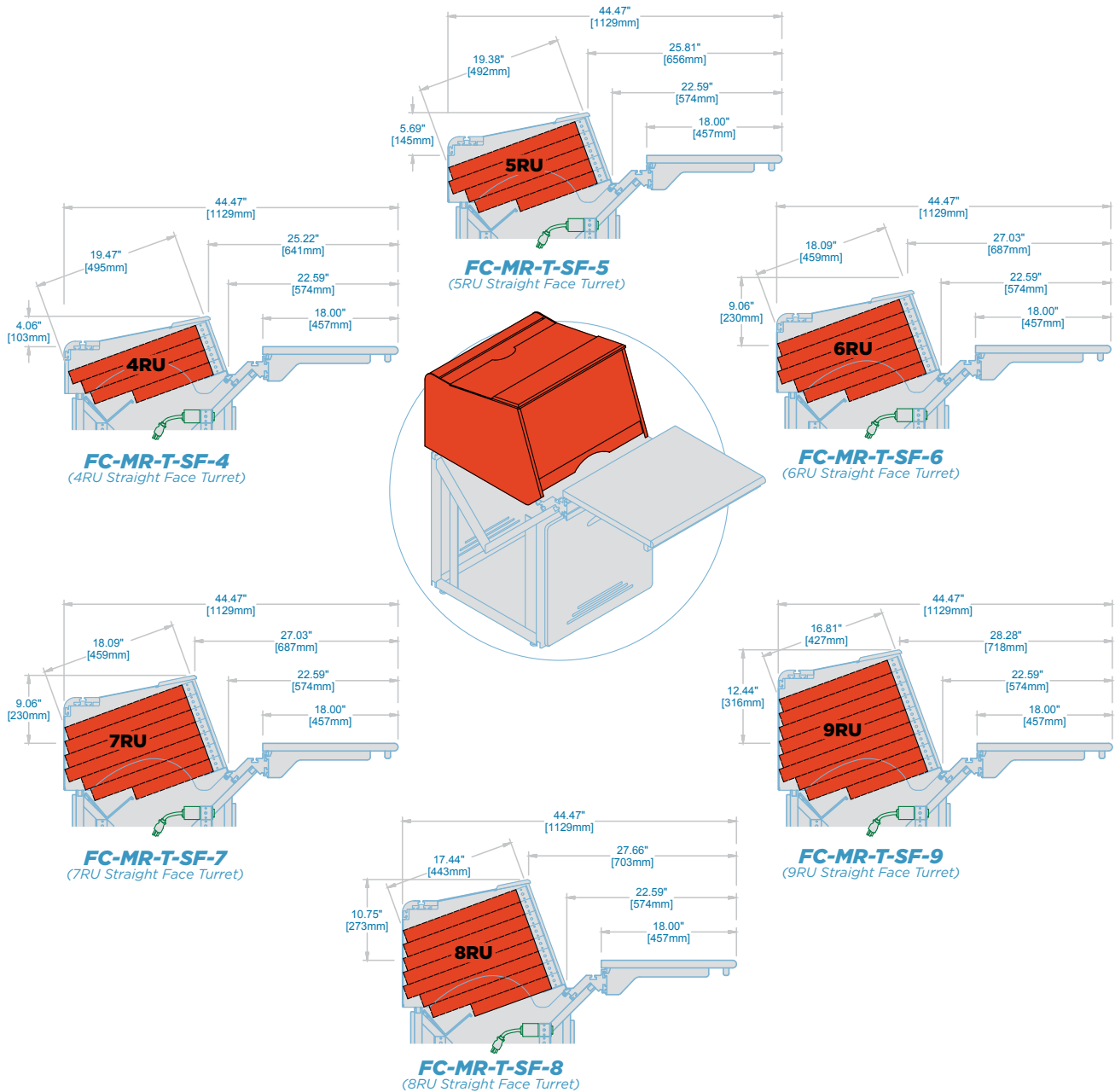
**FC-MR-T-EF-6**  
(6RU Extended Face Turret)





## Straight Face Turrets

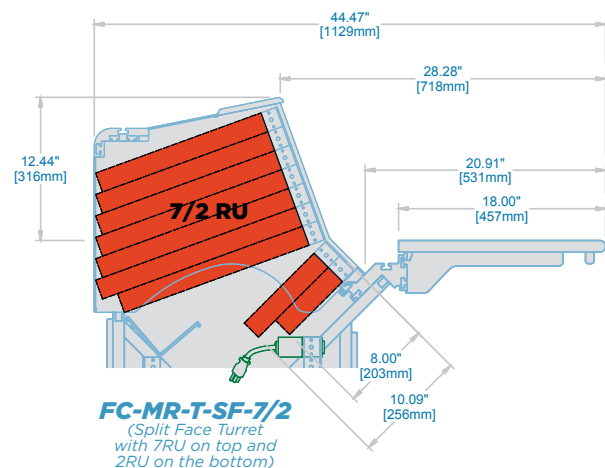
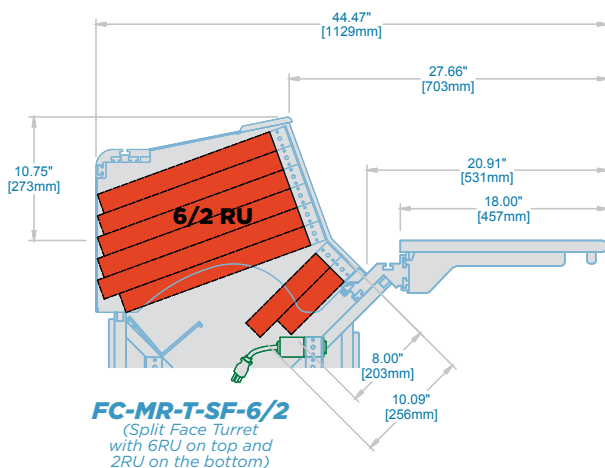
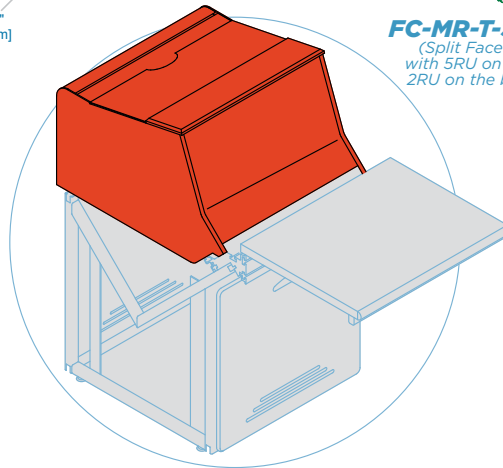
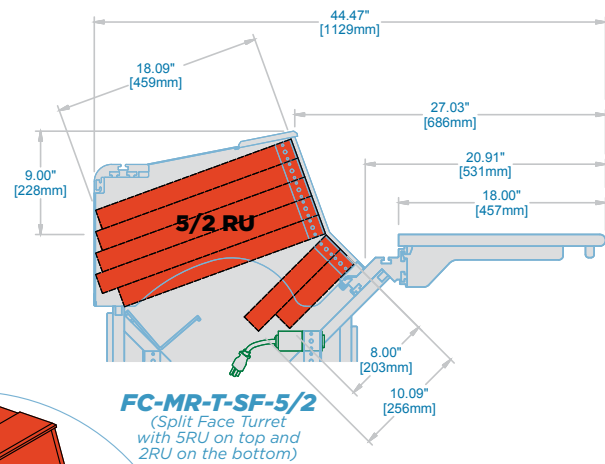
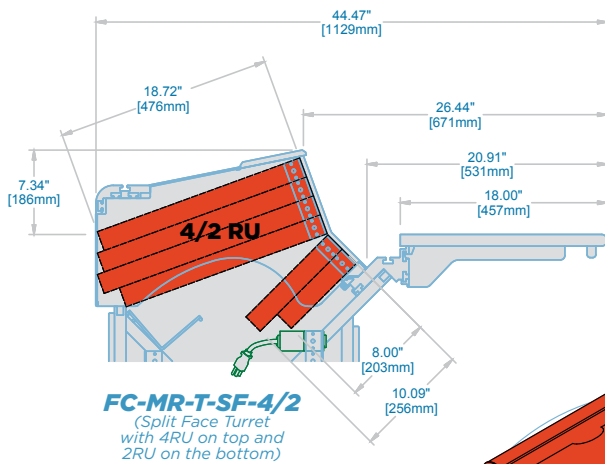
The classic MasteRail Turret. The lower 2 rack units sit below the countertop and are used for no or low touch equipment.





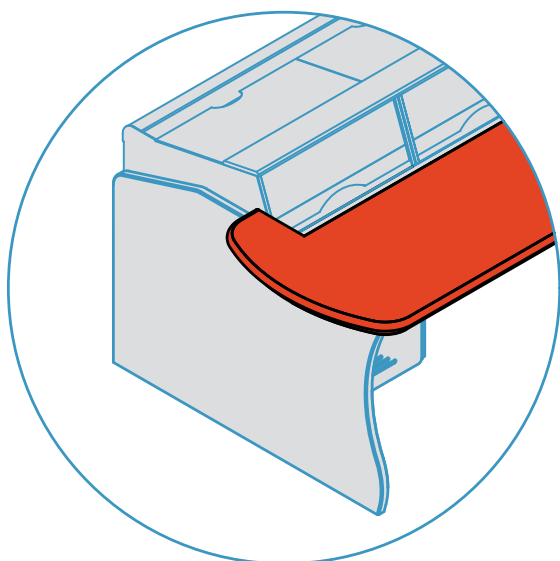
## Split Face Turrets

Split Face Turrets are designed to have the lower 2 rack units below the countertop for improved sightlines. The compound angle of the Split Face allows the equipment in the lower 2 rack units to be more accessible.

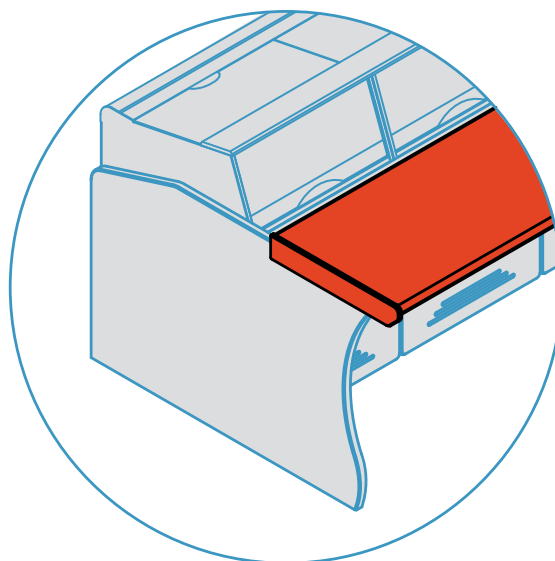




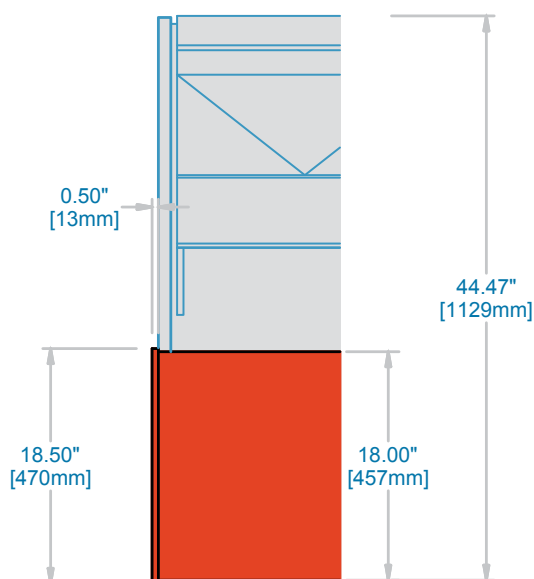
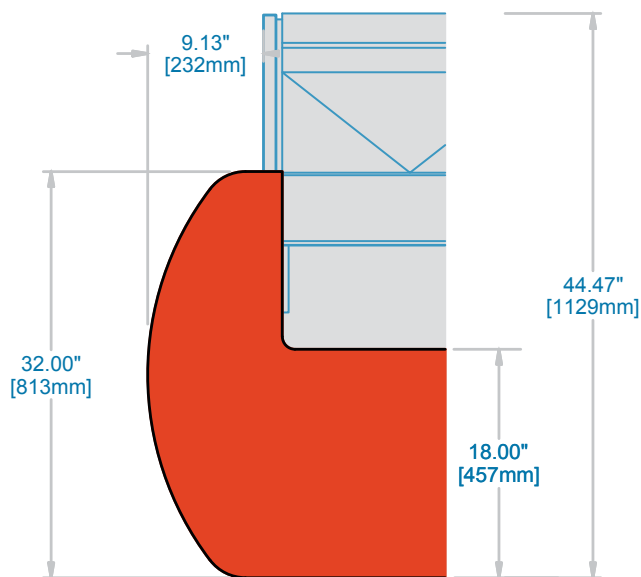
## Countertop Options



**FC-MR-CTOP-A**  
(Rounded Countertop)



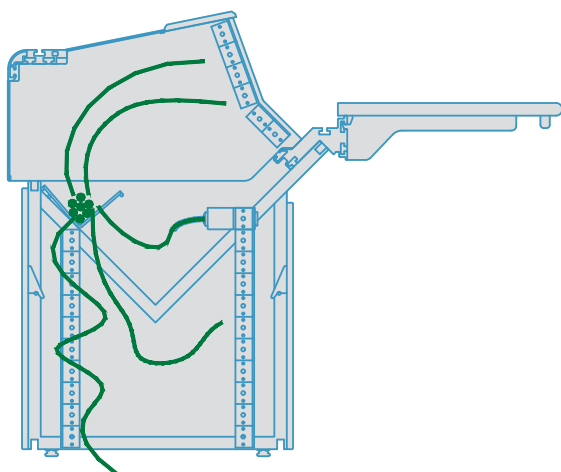
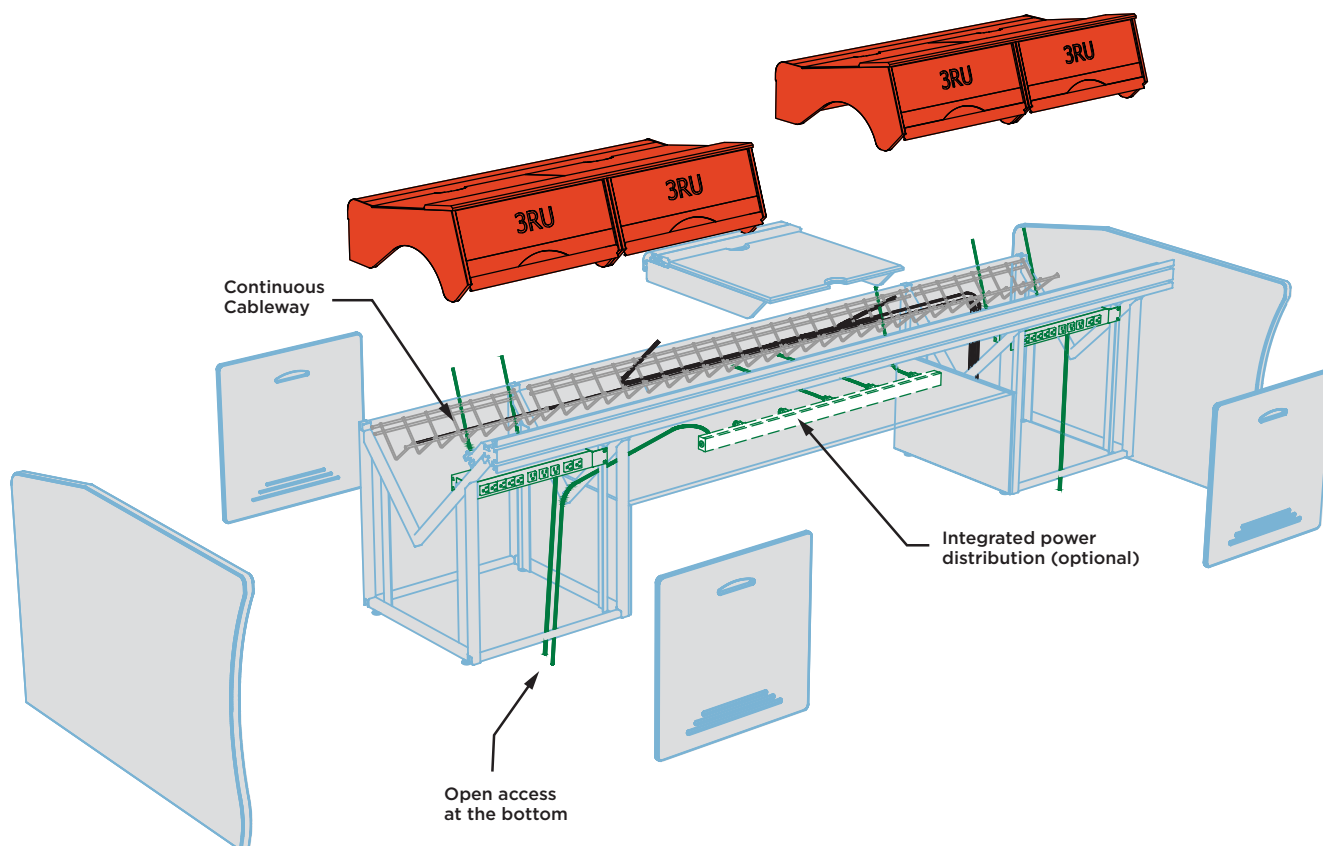
**FC-MR-CTOP-B**  
(Straight Countertop  
with edge)



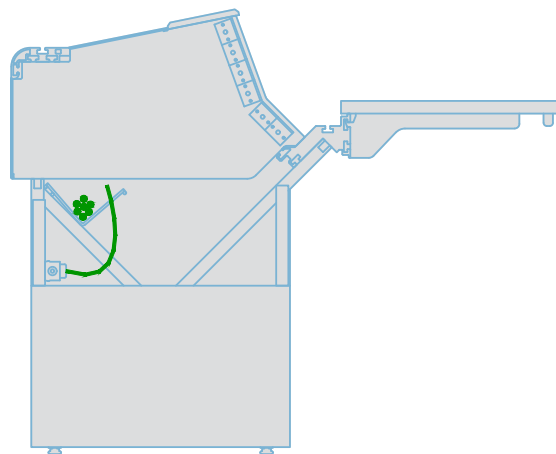


## Wiring

- Integrated power distribution (optional)
- Removable front and rear panels for easy access to the continuous cable management



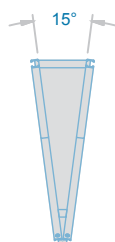
Example of rack base wiring



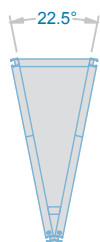
Example of clear bay span wiring



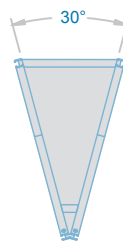
## Standard Concave or Convex Transition Angles



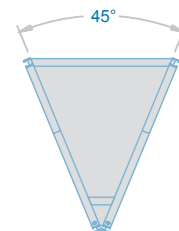
**FC-MR-TR-15**  
(15° transition angle)



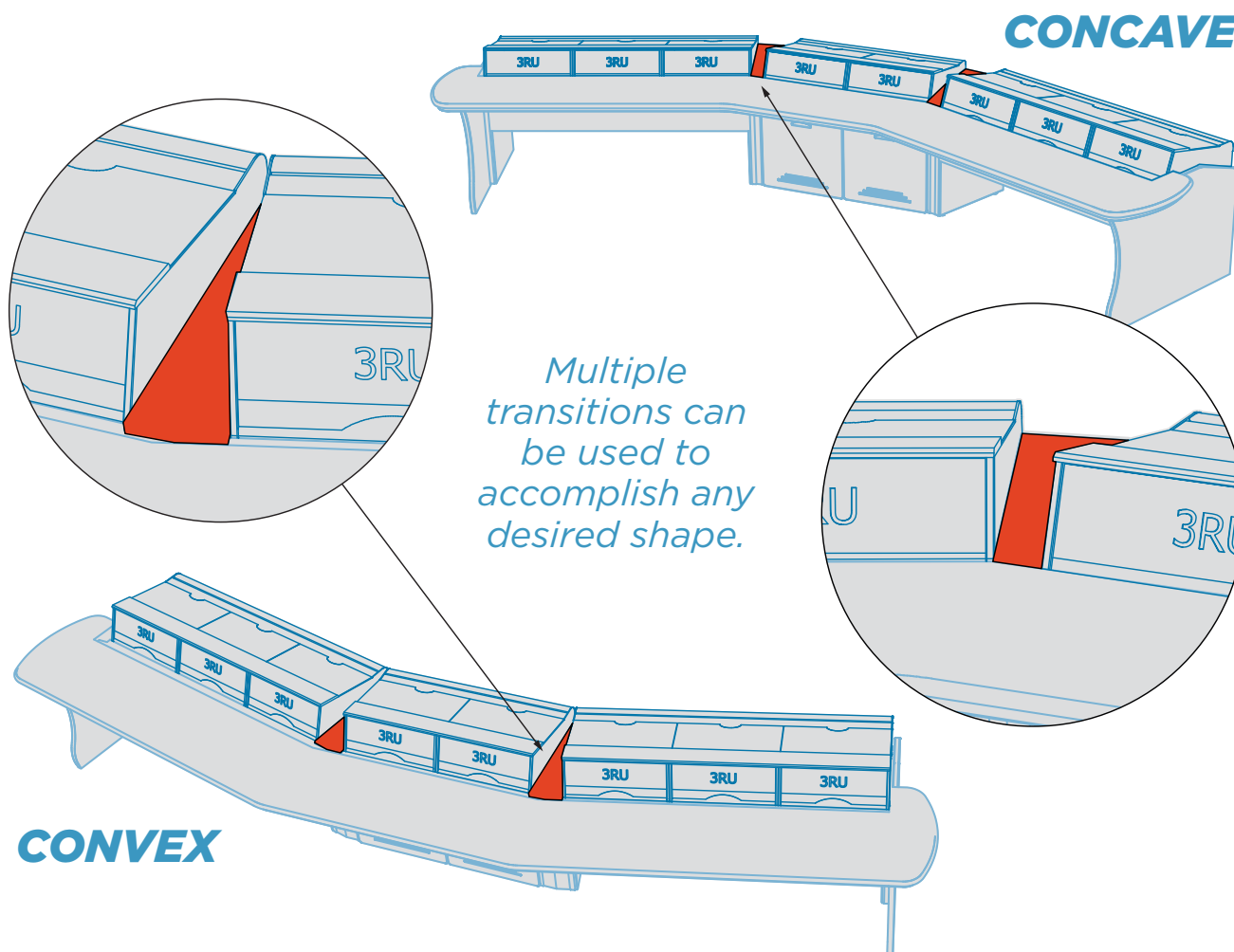
**FC-MR-TR-22.5**  
(22.5° transition angle)



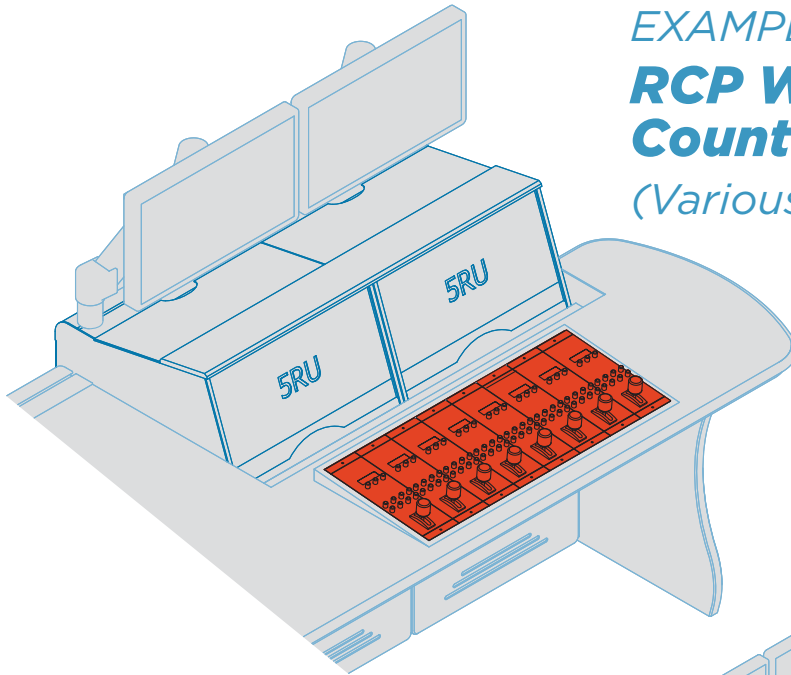
**FC-MR-TR-30**  
(30° transition angle)



**FC-MR-TR-45**  
(45° transition angle)



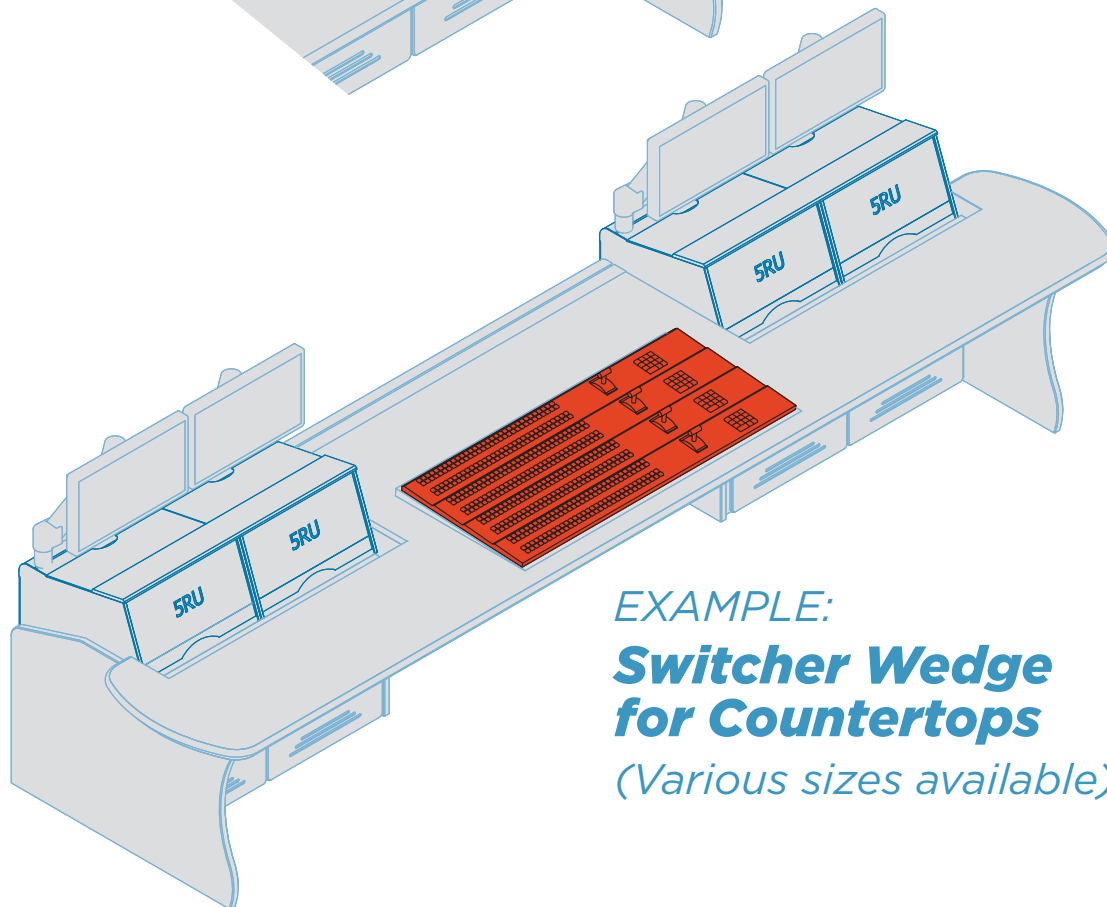




EXAMPLE:

## **RCP Wedge for Countertops**

*(Various sizes available)*



EXAMPLE:

## **Switcher Wedge for Countertops**

*(Various sizes available)*

# MasteRail™

## Specs & Configurations



MONITOR  
POST MOUNT ARM



**FC-PA-14-S**  
(30lb Weight Capacity)

DUAL MONITOR  
POST MOUNT ARM



**FC-PA-28-D**  
(40lb Weight Capacity)

FULLY ARTICULATING  
MONITOR ARM



**FC-AA-0313**  
(3-13lb Weight Capacity)

**FC-AA-0825**  
(8-25lb Weight Capacity)

**FC-AA-1331**  
(13-31lb Weight Capacity)

POST MOUNT  
SPEAKER PLATFORM



**FC-PA-14 SPEAKER**  
14" Post (20lb Weight Capacity)

**FC-PA-28 SPEAKER**  
28" Post (20lb Weight Capacity)

### MasteRail™ Universal Mounting System\*

Aluminum Extrusion has a channel used to mount a variety of accessories giving you maximum flexibility. (Mounts and accessories sold separately.)

\*Available in all MasteRail™ models



ARTICULATING  
TELEPHONE  
POST MOUNT



**FC-PA-14-PHONE**

GOOSENECK  
TASK LIGHT

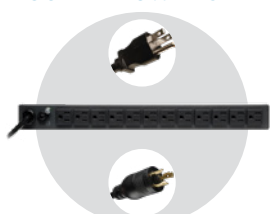


**FC-AC-GOOSENECK LT**

### Power Distribution Options

Rack Mount Power Distribution Units can be mounted in different locations depending on your wiring requirements.

RACK MOUNT (12)  
OUTLET POWER STRIP



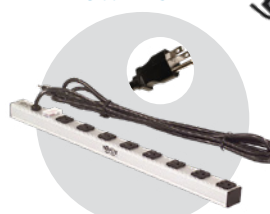
**FC-RS1215** (15 Amp)  
**FC-RS1220** (20 Amp)

FORECAST 1RU  
POWER DATA UNIT



**FC-PDM-1**

24" (8) OUTLET  
POWER STRIP



**FC-PS0815**

36" (14) OUTLET  
POWER STRIP



**FC-PS1415** (15 Amp)  
**FC-PS1420** (20 Amp)

All designs, plans, ideas & specifications in this drawing remain the entire property of Forecast Consoles Inc. and may not be reproduced or used in any manner without written consent.

(631) 253-9000 or [info@forecast-consoles.com](mailto:info@forecast-consoles.com)



## Forecast Standard Laminates







**MasterVision™**

*Low-Profile Production &  
Monitoring Console System*



**Sightline™**

*Configurable Monitor  
Wall System*



**GCX-Chassis™**

*Modular Desk System for  
One or More Operators*

For more information: **(800) 735-2070** or **info@forecast-consoles.com**

All designs, plans, ideas & specifications in this drawing remain the entire property of Forecast Consoles Inc. and may not be reproduced or used in any manner without written consent.

\*Prices upon request